

---

**Changes to legislation:** *There are outstanding changes not yet made to Council Regulation (EC) No 2411/98. Any changes that have already been made to the legislation appear in the content and are referenced with annotations. (See end of Document for details) [View outstanding changes](#)*

---

Council Regulation (EC) No 2411/98 of 3 November 1998 on the recognition in intra-Community traffic of the distinguishing sign of the Member State in which motor vehicles and their trailers are registered

**Changes to legislation:** There are outstanding changes not yet made to Council Regulation (EC) No 2411/98. Any changes that have already been made to the legislation appear in the content and are referenced with annotations. (See end of Document for details) View outstanding changes

## ANNEX

**SPECIFICATIONS FOR THE DISTINGUISHING SIGN OF  
THE MEMBER STATE OF REGISTRATION TO BE AFFIXED  
AT THE EXTREME LEFT OF THE REGISTRATION PLATE**

**SPECIFICATIONS FOR THE DISTINGUISHING SIGN OF THE MEMBER STATE OF  
REGISTRATION TO BE AFFIXED AT THE EXTREME LEFT OF THE REGISTRATION  
PLATE**

MODEL 1 (example)

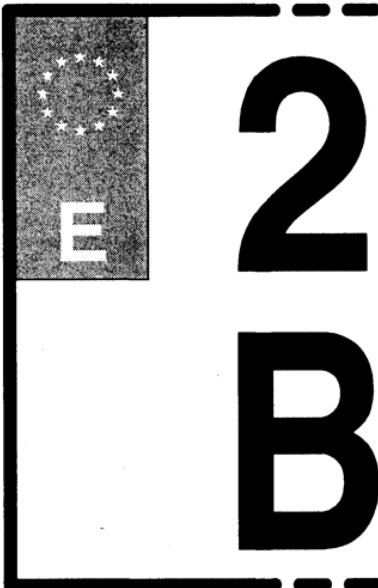
**Colours:**

1. Retro-reflecting blue background (Munsell reference 5,9 pb 3,4/15,1)
2. 12 retro-reflecting yellow stars
3. Retro-reflecting distinguishing sign of the Member State of registration, of a white or yellow colour

**Composition and dimensions:**

1. Blue background:  
height = minimum 98 mm  
width = minimum 40 mm, maximum 50 mm
2. The centres of the 12 stars to be arranged in a 15 mm radius circle; distance between two opposing peaks of any star = 4 to 5 mm
3. Distinguishing sign of the Member State of registration:  
height = minimum 20 mm  
width of character stroke = 4 to 5 mm

MODEL 2 (example)



Where the dimensions of the blue background have been reduced for registration plates taking up two lines (see model 2) and/or for registration plates intended for two or three-wheel motor vehicles, the dimensions of the stars and of the distinguishing sign of the Member State of registration may be proportionately reduced.

**Changes to legislation:**

There are outstanding changes not yet made to Council Regulation (EC) No 2411/98. Any changes that have already been made to the legislation appear in the content and are referenced with annotations.

[View outstanding changes](#)

**Changes and effects yet to be applied to :**

- Art. 1 words substituted by [S.I. 2018/1295 reg. 5\(2\)](#)
- Art. 3 substituted by [S.I. 2018/1295 reg. 5\(4\)](#)
- Art. 4 omitted by [S.I. 2018/1295 reg. 5\(5\)](#)

**Changes and effects yet to be applied to the whole legislation item and associated provisions**

- Signature words omitted by [S.I. 2018/1295 reg. 5\(6\)](#)
- Art. 2(2) substituted by [S.I. 2018/1295 reg. 5\(3\)](#)