



OFFERYNNAU STATUDOL
CYMRU

WELSH STATUTORY
INSTRUMENTS

2022 Rhif 585 (Cy. 135)

2022 No. 585 (W. 135)

**HARBYRAU, DOCIAU,
PIERAU A FFERÏAU, CYMRU**

**HARBOURS, DOCKS, PIERS
AND FERRIES, WALES**

Gorchymyn Adolygu Harbwr
Abertawe (Cau Doc Tywysog
Cymru) 2022

The Swansea (Closure of the Prince
of Wales Dock) Harbour Revision
Order 2022

NODYN ESBONIADOL

(Nid yw'r nodyn hwn yn rhan o'r Gorchymyn)

Mae'r Gorchymyn hwn wedi ei wneud ar gais Associated British Ports ("Porthladdoedd AB"), sef yr awdurdod harbwr ar gyfer Doc Tywysog Cymru (y "Doc") ym Mhorthladd Abertawe (y "Porthladd"), gan Weinidogion Cymru drwy arfer y pwerau a roddir gan adran 14 o Ddeddf Harbyrau 1964.

Mae'r Gorchymyn hwn yn awdurdodi cau'r Doc ac yn dod â chymhwysiad deddfwriaeth leol i ben, gan gynnwys cytundebau sydd wedi eu hatodi i'r ddeddfwriaeth honno, i'r graddau y maent yn ymwneud â'r Doc.

Pan wneir y Gorchymyn hwn a phan gaeir y Doc, bydd yr hyn a ganlyn yn cymryd effaith—

- (a) bydd y Doc yn peidio â ffurfio rhan o Borthladd Abertawe,
- (b) bydd dyletswyddau a rhwymedigaethau statudol Porthladdoedd AB mewn perthynas â'r Doc yn dod i ben,
- (c) bydd pob hawl fordwyo mewn perthynas â'r Doc yn cael ei diddymu, a
- (d) bydd y rhwymedigaeth ar Borthladdoedd AB i gynnal mynediad mordwyo i'r Doc o weddill y Porthladd yn cael ei diddymu.

Gellir edrych ar gopiâu o'r planiau y cyfeirir atynt yn y Gorchymyn hwn yn swyddfeydd Llywodraeth Cymru, Parc Cathays, Caerdydd CF10 3NQ ac ym mhrif swyddfa Porthladdoedd AB.

EXPLANATORY NOTE

(This note is not part of the Order)

This Order is made on the application of Associated British Ports ("AB Ports"), the harbour authority for the Prince of Wales Dock (the "Dock") at the Port of Swansea (the "Port"), by the Welsh Ministers in exercise of the powers conferred by section 14 of the Harbours Act 1964.

This Order authorises the closure of the Dock and ceases the application of local legislation, including agreements scheduled to that legislation, so far as they relate to the Dock.

On the making of this Order and the closure of the Dock, the following will take effect—

- (a) the Dock will cease to form part of the Port of Swansea,
- (b) AB Ports' statutory duties and obligations in relation to the Dock will cease,
- (c) all rights of navigation in relation to the Dock will be extinguished, and
- (d) the obligation on AB Ports to maintain navigational access to the Dock from the rest of the Port will be extinguished.

Copies of the plans referred to in this Order can be inspected at the office of the Welsh Government, Cathays Park, Cardiff CF10 3NQ and at the principal office of AB Ports.

Ystyriwyd Cod Ymarfer Gweinidogion Cymru ar gynnal Aseidiadau Effaith Rheoleiddiol mewn perthynas â'r Gorchymyn hwn. O ganlyniad, ystyriwyd nad oedd yn angenrheidiol cynnal aseiad effaith rheoleiddiol o'r costau a'r manteision sy'n debygol o ddeillio o gydymffurfio â'r Gorchymyn hwn.

The Welsh Ministers' Code of Practice on the carrying out of Regulatory Impact Assessments was considered in relation to this Order. As a result, it was not considered necessary to carry out a regulatory impact assessment as to the likely costs and benefits of complying with this Order.

2022 Rhif 585 (Cy. 135)

**HARBYRAU, DOCIAU,
PIERAU A FFERÏAU, CYMRU**

Gorchymyn Adolygu Harbwr
Abertawe (Cau Doc Tywysog
Cymru) 2022

Gwnaed 24 Mai 2022
Yn dod i rym 26 Mai 2022

CYNNWYS

**RHAN 1
RHAGARWEINIOL**

1. Enwi a dod i rym
2. Dehongli

**RHAN 2
CAU DOC TYWYSOG CYMRU**

3. Cau Doc Tywysog Cymru
4. Cymhwysiad Deddfau Harbwr
Abertawe 1874 – 1901
5. Symud llestrau o Ddoc Tywysog
Cymru
6. O ran llestrau yn mynd i Ddoc
Tywysog Cymru

ATODLEN 1 – Plan terfynau porthladd Porthladd
Abertawe

ATODLEN 2 – Plan Doc Tywysog Cymru

2022 No. 585 (W. 135)

**HARBOURS, DOCKS, PIERS
AND FERRIES, WALES**

The Swansea (Closure of the Prince
of Wales Dock) Harbour Revision
Order 2022

Made 24 May 2022
Coming into force 26 May 2022

CONTENTS

**PART 1
PRELIMINARY**

1. Title and coming into force
2. Interpretation

**PART 2
CLOSURE OF THE PRINCE OF WALES DOCK**

3. Closure of the Prince of Wales Dock
4. Application of the Swansea Harbour
Acts 1874 – 1901
5. Removal of vessels from the Prince of
Wales Dock
6. As to vessels entering the Prince of
Wales Dock

SCHEDULE 1 - Port of Swansea port limits plan

SCHEDULE 2 - The Prince of Wales Dock plan

Yn unol ag adran 14(1) o Ddeddf Harbyrau 1964(1) (“y Ddeddf”), mae’r Gorchymyn hwn wedi ei wneud mewn perthynas â harbwr sy’n cael ei wella, ei gynnal neu ei reoli gan awdurdod harbwr wrth arfer a chyflawni pwerau a dyletswyddau statudol, i gyflawni amcanion a bennir yn Atodlen 2 i’r Ddeddf(2).

Mae Associated British Ports, sef yr awdurdod harbwr ar gyfer Porthladd Abertawe, wedi gwneud cais yn unol ag adran 14(2)(a) o’r Ddeddf am orchymyn adolygu harbwr o dan adran 14 o’r Ddeddf.

Mae swyddogaethau’r Gweinidog priodol at ddiben yr adran honno wedi eu trosglwyddo i Weinidogion Cymru(3).

Mae hysbysiad wedi ei gyhoeddi yn unol â gofynion paragraff 10 o Atodlen 3 i’r Ddeddf ac mae darpariaethau paragraffau 15 a 17 o Atodlen 3 i’r Ddeddf wedi eu bodloni. Ni wnaed dim gwrthwynebiadau i’r cais.

Mae Gweinidogion Cymru, drwy arfer y pwerau a roddir gan adran 14(1) a (3) o’r Ddeddf, a chan eu bod yn fodlon bod gofynion adran 14(2)(b) a (2B) o’r Ddeddf honno wedi eu bodloni, yn gwneud y Gorchymyn a ganlyn.

In accordance with section 14(1) of the Harbours Act 1964(1) (“the Act”), this Order is made in relation to a harbour which is being improved, maintained or managed by a harbour authority in the exercise and performance of statutory powers and duties, for achieving objects specified in Schedule 2 to the Act(2).

Associated British Ports, as harbour authority for the Port of Swansea, has applied in accordance with section 14(2)(a) of the Act for a harbour revision order under section 14 of the Act.

The functions of the appropriate Minister for the purpose of that section have been transferred to the Welsh Ministers(3).

Notice has been published in accordance with the requirements of paragraph 10 of Schedule 3 to the Act and the provisions of paragraphs 15 and 17 of Schedule 3 to the Act have been satisfied. No objections to the application have been made.

The Welsh Ministers, in exercise of the powers conferred by section 14(1) and (3) of the Act and being satisfied that the requirements of section 14(2)(b) and (2B) of that Act have been met, make the following Order.

RHAN 1

RHAGARWEINIOL

Enwi a dod i rym

1.—(1) Enw’r Gorchymyn hwn yw Gorchymyn Adolygu Harbwr Abertawe (Cau Doc Tywysog Cymru) 2022.

(2) Daw’r Gorchymyn hwn i rym ar 26 Mai 2022.

PART 1

PRELIMINARY

Title and coming into force

1.—(1) The title to this Order is the Swansea (Closure of the Prince of Wales Dock) Harbour Revision Order 2022.

(2) This Order comes into force on 26 May 2022.

(1) 1964 p. 40. Diwygiwyd adran 14 gan adran 18 o Ddeddf Trafnidiaeth 1981 (p. 56), paragraffau 2 i 4(1) a 14 o Atodlen 6 iddi, ac adran 40 ac Atodlen 12 (Rhan 2) iddi; adran 63(1) o Ddeddf Trafnidiaeth a Gweithfeydd 1992 (p. 42) a pharagraff 1 o Atodlen 3 iddi; gan reoliad 2 o O.S. 2006/1177 a’r Atodlen (Rhan 1) iddo; gan adran 36 o Ddeddf Cynllunio 2008 (p. 29) a pharagraffau 8 a 9 o Atodlen 2 iddi; a chan erthygl 2 o O.S. 2009/1941 a pharagraff 12 o Atodlen 1 iddo.

(2) Diwygiwyd Atodlen 2 yn berthnasol gan baragraff 9 o Atodlen 3 i Ddeddf Trafnidiaeth a Gweithfeydd 1992 (p. 42); adrannau 36(4) a 50(1) o Ddeddf Dociau a Harbyrau 1966 (p. 28); adrannau 58(7), 101(1), 141(6), 160(1)(2)(4), 163, 189(4) i (10), 190, a 193(1) o Ddeddf Dŵr 1989 (p. 15), paragraff 31(1) o Atodlen 25 iddi, a pharagraffau 3(1)(2), 17, 40(4), 57(6) a 58 o Atodlen 26 iddi; a rheoliad 2 o O.S. 2006/1177 a’r Atodlen (Rhan 1) iddo.

(3) Adran 29(1) a (2)(b)(ii) o Ddeddf Cymru 2017 (p. 4), yn ddarostyngedig i baragraff 1(1) o Atodlen 1 i O.S. 2018/278.

(1) 1964 c. 40. Section 14 was amended by the Transport Act 1981 (c. 56), section 18 and Schedule 6, paragraphs 2 to 4(1) and 14 and section 40 and Schedule 12 (Part 2); the Transport and Works Act 1992 (c. 42), section 63(1) and Schedule 3, paragraph 1; by S.I. 2006/1177, regulation 2 and the Schedule (Part 1); by the Planning Act 2008 (c. 29), section 36 and Schedule 2, paragraphs 8 and 9; and by S.I. 2009/1941, article 2 and Schedule 1, paragraph 12.

(2) Schedule 2 was relevantly amended by the Transport and Works Act 1992 (c. 42), Schedule 3, paragraph 9; the Docks and Harbours Act 1966 (c. 28), sections 36(4) and 50(1); the Water Act 1989 (c. 15), sections 58(7), 101(1), 141(6), 160(1)(2)(4), 163, 189(4) to (10), 190, 193(1), Schedule 25, paragraph 31(1) and Schedule 26, paragraphs 3(1)(2), 17, 40(4), 57(6) and 58; and S.I. 2006/1177, regulation 2 and the Schedule (Part 1).

(3) Section 29(1) and (2)(b)(ii) of the Wales Act 2017 (c. 4), subject to S.I. 2018/278 Schedule 1 paragraph 1(1).

Dehongli

2. Yn y Gorchymyn hwn—

ystyr “beic jet” (“*jet bike*”) yw unrhyw fad dŵr (nad yw’n strwythur sydd, oherwydd ei siâp ceugrwm, yn darparu hynofedd ar gyfer cludo personau neu nwyddau) sy’n cael ei yrru gan injan jet ddŵr neu ddull mecanyddol arall o yrru ac sy’n cael ei lywio naill ai—

- (a) drwy gyfrwng system gysylltwaith a weithredir â bar handlenni (gyda neu heb lyw yn y starn),
- (b) gan y person neu’r personau sy’n reidio’r bad gan ddefnyddio pwysau ei gorff neu bwysau eu cyrff at y diben hwnnw, neu
- (c) drwy gyfuniad o’r dulliau y cyfeirir atynt yn (a) a (b);

ystyr “Deddf 1874” (“*the 1874 Act*”) yw Deddf Harbwr Abertawe 1874(1);

ystyr “Deddf 1894” (“*the 1894 Act*”) yw Deddf Harbwr Abertawe 1894(2);

ystyr “Deddf 1901” (“*the 1901 Act*”) yw Deddf Harbwr Abertawe 1901(3);

ystyr “Deddfau Harbwr Abertawe 1874 – 1901” (“*the Swansea Harbour Acts 1874 – 1901*”) yw Deddf 1874, Deddf 1894 a Deddf 1901 gyda’i gilydd;

ystyr “Doc Tywysog Cymru” (“*the Prince of Wales Dock*”) yw’r doc a’r gweithfeydd cysylltiedig sy’n ffurfio rhan o Borthladd Abertawe a awdurdodwyd gan Ddeddfau Harbwr Abertawe 1874 – 1901 ac a ddangosir ag ymyl coch ar blan Doc Tywysog Cymru;

ystyr “y docfeistr” (“*the dock master*”) yw unrhyw berson a benodir yn ddocfeistr Porthladdoedd AB ym Mhorthladd Abertawe ac unrhyw berson arall sydd am y tro wedi ei awdurdodi gan Borthladdoedd AB i weithredu, naill ai yn gyffredinol neu at ddiben penodol, yn rhinwedd docfeistr;

mae “llestr” (“*vessel*”) yn cynnwys llong, cwch, cwch preswyl, rafft, ysgraff neu fad dŵr o unrhyw ddisgrifiad, sut bynnag y caiff ei yrru neu ei symud, ac mae’n cynnwys badau nad ydynt yn dadleoli, beic jet, bad dŵr personol, awyren fôr ar arwyneb y dŵr, llestr hydroffoil, hofrenfad neu unrhyw gerbyd amffibiaidd arall ac unrhyw beth arall a adeiladwyd neu a addaswyd ar gyfer arnofio

Interpretation

2. In this Order—

“the 1874 Act” (“*Deddf 1874*”) means the Swansea Harbour Act 1874(1);

“the 1894 Act” (“*Deddf 1894*”) means the Swansea Harbour Act 1894(2);

“the 1901 Act” (“*Deddf 1901*”) means the Swansea Harbour Act 1901(3);

“AB Ports” (“*Porthladdoedd AB*”) means Associated British Ports;

“the dock master” (“*y docfeistr*”) means any person appointed as the dock master of AB Ports at the Port of Swansea and any other person for the time being authorised by AB Ports to act, either generally or for a specific purpose, in the capacity of dock master;

“jet bike” (“*beic jet*”) means any watercraft (not being a structure which by reason of its concave shape provides buoyancy for the carriage of persons or goods) propelled by a water jet engine or other mechanical means of propulsion and steered either—

- (a) by means of a handlebar-operated linkage system (with or without a rudder at the stern),
- (b) by the person or persons riding the craft using their body weight for the purpose, or
- (c) by a combination of the methods referred to in (a) and (b);

“master” (“*meistr*”) in relation to a vessel, means any person having or taking command, charge, management or conduct of the vessel for the time being;

“the Port of Swansea” (“*Porthladd Abertawe*”) means the docks and harbour comprising the undertaking of AB Ports at Swansea the limits of which are outlined in the Port of Swansea port limits plan;

“the Port of Swansea port limits plan” (“*plan terfynau porthladd Porthladd Abertawe*”) means the plan set out in Schedule 1;

“the Prince of Wales Dock” (“*Doc Tywysog Cymru*”) means the dock and associated works which form part of the Port of Swansea authorised by the Swansea Harbour Acts 1874 – 1901 and which are shown edged red on the Prince of Wales Dock plan;

(1) 1874 p. civ.

(2) 1894 p. cv.

(3) 1901 p. ccliii.

(1) 1874 c. civ.

(2) 1894 c. cv.

(3) 1901 c. ccliii.

ar ddŵr neu fod wedi ymsuddo mewn dŵr (boed yn barhaol neu dros dro);

ystyr “meistr” (“*master*”) mewn perthynas â llestr yw unrhyw berson a chanddo neu sy’n cymryd llywyddiaeth, cyfrifoldeb, rheolaeth neu arweiniad dros y llestr am y tro;

ystyr “plan Doc Tywysog Cymru” (“*the Prince of Wales Dock plan*”) yw’r plan a nodir yn Atodlen 2;

ystyr “plan terfynau porthladd Porthladd Abertawe” (“*the Port of Swansea port limits plan*”) yw’r plan a nodir yn Atodlen 1;

ystyr “Porthladd Abertawe” (“*the Port of Swansea*”) yw’r dociau a’r harbwr sy’n ffurfio ymgymeriad Porthladdoedd AB yn Abertawe y mae ei derfynau wedi eu hamlinellu ym mhlan terfynau porthladd Porthladd Abertawe;

ystyr “Porthladdoedd AB” (“*AB Ports*”) yw Associated British Ports.

“the Prince of Wales Dock plan” (“*plan Doc Tywysog Cymru*”) means the plan set out in Schedule 2;

“the Swansea Harbour Acts 1874 – 1901” (“*Deddfau Harbwr Abertawe 1874 – 1901*”) means together the 1874 Act, the 1894 Act and the 1901 Act;

“vessel” (“*llestr*”) includes a ship, boat, houseboat, raft, pontoon or watercraft of any description, however propelled or moved, and includes non-displacement craft, a jet bike, a personal watercraft, a seaplane on the surface of the water, a hydrofoil vessel, a hovercraft or any other amphibious vehicle and any other thing constructed or adapted for floating on or being submersed in water (whether permanently or temporarily).

RHAN 2

CAU DOC TYWYSOG CYMRU

Cau Doc Tywysog Cymru

3.—(1) Caiff Porthladdoedd AB, ar ddiwrnod o fewn 42 o ddiwrnodau gan ddechrau pan ddaw’r Gorchymyn hwn i rym, gau Doc Tywysog Cymru.

(2) Pan gaeir Doc Tywysog Cymru o dan baragraff (1)—

- (a) mae Doc Tywysog Cymru yn peidio â ffurfio rhan o Borthladd Abertawe;
- (b) mae pob dyletswydd a rhwymedigaeth a osodir ar Borthladdoedd AB o dan Ddeddfau Harbwr Abertawe 1874 – 1901 mewn cysylltiad â Doc Tywysog Cymru i ddod i ben;
- (c) mae unrhyw hawliau mordwyo, a phob un ohonynt, o fewn Doc Tywysog Cymru wedi eu diddymu;
- (d) mae unrhyw ddyletswyddau neu rwymedigaethau, a phob un ohonynt, i gynnal sianel fordwyol i Ddoc Tywysog Cymru o fewn yr ardal a ddangosir â llinellau glas ar blân Doc Tywysog Cymru neu i gynnal pont droi ar draws yr ardal honno wedi ei diddymu.

(3) Cyn arfer y pŵer a roddir iddo gan baragraff (1) rhaid i Borthladdoedd AB—

- (a) cyhoeddi hysbysiad o’i fwriad i gau Doc Tywysog Cymru yn Lloyd’s List ac unwaith ym mhob un o ddwy wythnos olynol mewn

PART 2

CLOSURE OF THE PRINCE OF WALES DOCK

Closure of the Prince of Wales Dock

3.—(1) AB Ports may on a day within 42 days beginning with the coming into force of this Order close the Prince of Wales Dock.

(2) Upon the closure of the Prince of Wales Dock under paragraph (1)—

- (a) the Prince of Wales Dock ceases to form part of the Port of Swansea;
- (b) all duties and obligations imposed on AB Ports under the Swansea Harbour Acts 1874 – 1901 with respect to or in connection with the Prince of Wales Dock are to cease;
- (c) any and all rights of navigation within the Prince of Wales Dock are extinguished;
- (d) any and all duties or obligations to maintain a navigable channel to the Prince of Wales Dock within the area shown hatched blue on the Prince of Wales Dock plan or to maintain a swing bridge across that area are extinguished.

(3) Before exercising the power conferred on it by paragraph (1) AB Ports must—

- (a) publish a notice of its intention to close the Prince of Wales Dock in Lloyd’s List and

papur newydd lleol a gyhoeddir neu sy'n cylchredeg yn Abertawe gyda chyfnod rhwng y dyddiadau cyhoeddi nad yw'n llai na chwe diwrnod gwaith;

- (b) arddangos copi o un o'r hysbysiadau y cyfeirir atynt ym mharagraff 3(a) mewn lle amlwg yng nghyffiniau Porthladd Abertawe;
- (c) rhoi hysbysiad ysgrifenedig i Weinidogion Cymru o'i fwriad i gau Doc Tywysog Cymru.

(4) Rhaid i'r hysbysiadau y cyfeirir atynt ym mharagraff 3(a)—

- (a) datgan bod Porthladdoedd AB yn bwriadu cau Doc Tywysog Cymru i lestrau a'r dyddiad y mae Doc Tywysog Cymru i gau i lestrau ohono;
- (b) pennu dyddiad, sy'n ddyddiad nad yw'n gynharach nag un mis ar ôl dyddiad y diweddaraf o'r tri hysbysiad ym mharagraff 3(a) erbyn pryd y mae rhaid i bob llestr gael ei symud o Ddoc Tywysog Cymru.

Cymhwysiad Deddfau Harbwr Abertawe 1874 – 1901

4.—(1) Pan gaeir Doc Tywysog Cymru yn unol ag erthygl 3, mae Deddfau Harbwr Abertawe 1874 – 1901, gan gynnwys unrhyw gytundeb sydd wedi ei atodi i unrhyw un neu ragor o'r Deddfau hynny, yn peidio â bod yn gymwys i Ddoc Tywysog Cymru.

(2) Nid yw paragraff (1) yn gymwys i—

- (a) adran 6 (pŵer i ddargyfeirio dŵr i'r dociau) o Ddeddf 1874;
- (b) adran 7 (pŵer i ddargyfeirio dŵr i'r dociau) o Ddeddf 1894;
- (c) adran 7 (pŵer i gymryd dŵr a'i ddargyfeirio) o Ddeddf 1901.

Symud llestrau o Ddoc Tywysog Cymru

5.—(1) Os nad yw meist'r unrhyw lestr sydd o fewn Doc Tywysog Cymru yn symud y llestr cyn y dyddiad a bennir yn unol ag erthygl 3(4)(b), caiff y docfeistr beri i'r llestr honno gael ei symud o Ddoc Tywysog Cymru a'i hangori neu ei gosod yn unrhyw le arall lle y gall, heb niwed, gael ei hangori neu ei gosod.

(2) Caiff Porthladdoedd AB adennill fel dyled gan feistr unrhyw lestr a symudir o dan baragraff (1) bob traul resymol yr eir iddi mewn cysylltiad â'i symud.

once in each of two successive weeks in a local newspaper published or circulating in Swansea with an interval between the dates of publication of not less than six working days;

- (b) display a copy of one of the notices referred to in paragraph 3(a) in a conspicuous position in the vicinity of the Port of Swansea;
- (c) give notice of its intention in writing to close the Prince of Wales Dock to the Welsh Ministers.

(4) The notices referred to in paragraph 3(a) must—

- (a) state that AB Ports intends to close the Prince of Wales Dock to vessels and the date from which the Prince of Wales Dock is to close to vessels;
- (b) specify a date, which is a date not earlier than one month after the date of the latest of the three notices in paragraph (3)(a) by which all vessels must be removed from the Prince of Wales Dock.

Application of the Swansea Harbour Acts 1874 – 1901

4.—(1) Upon the closure of the Prince of Wales Dock in accordance with article 3, the Swansea Harbour Acts 1874 – 1901, including any agreement scheduled to any of those Acts cease to apply to the Prince of Wales Dock.

(2) Paragraph (1) does not apply to—

- (a) section 6 (power to divert water into the docks) of the 1874 Act;
- (b) section 7 (power to divert water into the docks) of the 1894 Act;
- (c) section 7 (power to take and divert water) of the 1901 Act.

Removal of vessels from the Prince of Wales Dock

5.—(1) If the master of any vessel which is within the Prince of Wales Dock does not remove the vessel before the date specified in accordance with article 3(4)(b), the dock master may cause that vessel to be removed from the Prince of Wales Dock and moored or laid in any other place where it may without injury be moored or laid.

(2) AB Ports may recover as a debt from the master of any vessel removed under paragraph (1) all reasonable expenses incurred by it in respect of its removal.

O ran llestrau yn mynd i Ddoc Tywysog Cymru

6. Os yw unrhyw lestr yn mynd i Ddoc Tywysog Cymru ar ôl y dyddiad a bennir yn erthygl 3(4)(b) o'r Gorchymyn hwn, caiff y docfeistr gyfarwyddo meistr y llestr i symud y llestr o Ddoc Tywysog Cymru, ac os nad yw meistr y llestr yn cydymffurfio heb oedi gormodol â chyfarwyddydau o'r fath, mae erthygl 5 yn gymwys i'r llestr fel pe bai'r llestr wedi bod o fewn Doc Tywysog Cymru cyn y dyddiad hwnnw.

As to vessels entering the Prince of Wales Dock

6. If any vessel enters the Prince of Wales Dock after the date specified in article 3(4)(b) of this Order, the dock master may direct the master of the vessel to remove the vessel from the Prince of Wales Dock, and if the master of the vessel does not comply without undue delay with such directions article 5 applies to the vessel as if the vessel had been within the Prince of Wales Dock before that date.

Lee Waters

Y Dirprwy Weinidog Newid Hinsawdd, yn gweithredu o dan awdurdod y Gweinidog Newid Hinsawdd, un o Weinidogion Cymru
24 Mai 2022

Deputy Minister for Climate Change, acting under authority of the Minister for Climate Change, one of the Welsh Ministers
24 May 2022

Atodlen 1

Erthygl 2

SCHEDULE 1

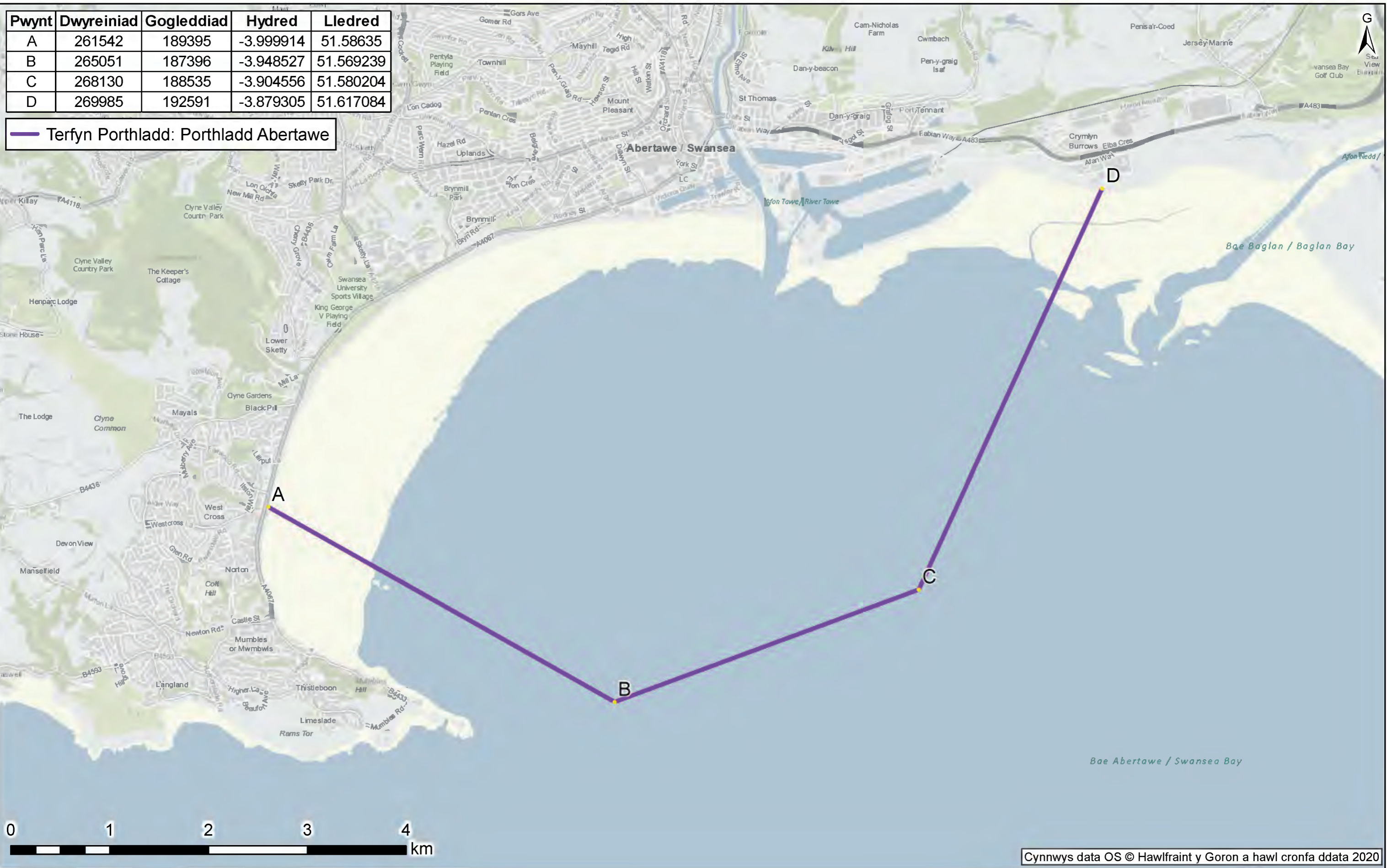
Article 2

Plan terfynau porthladd Porthladd
Abertawe

Port of Swansea port limits plan

Pwynt	Dwyreiniad	Gogleddiad	Hydred	Lledred
A	261542	189395	-3.999914	51.58635
B	265051	187396	-3.948527	51.569239
C	268130	188535	-3.904556	51.580204
D	269985	192591	-3.879305	51.617084

— Terfyn Porthladd: Porthladd Abertawe



Cynnwys data OS © Hawlfraint y Goron a hawl cronfa ddata 2020

© Hawlfraint y Goron a hawliau cronfa ddata 2022 yr Arolwg Ordnans 0100031673




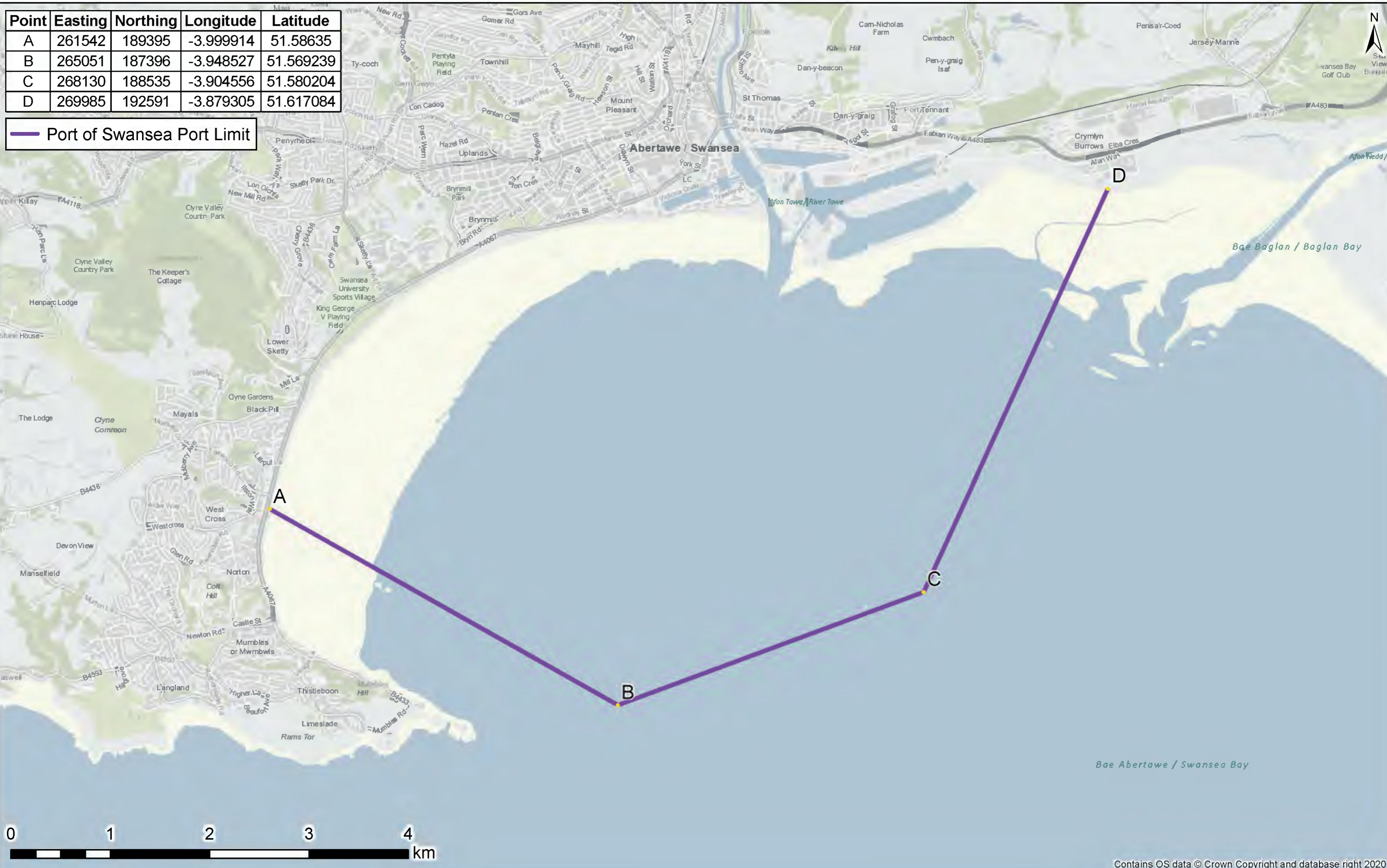
Plan Terfynau Porthladd Porthladd Abertawe

Dyddiad	Gan
12/05/22	AJB

Graddfa
1:35,000 @ A3

Point	Easting	Northing	Longitude	Latitude
A	261542	189395	-3.999914	51.58635
B	265051	187396	-3.948527	51.569239
C	268130	188535	-3.904556	51.580204
D	269985	192591	-3.879305	51.617084

 Port of Swansea Port Limit



Contains OS data © Crown Copyright and database right 2020

© Crown copyright and database rights 2022 Ordnance Survey 0100031673



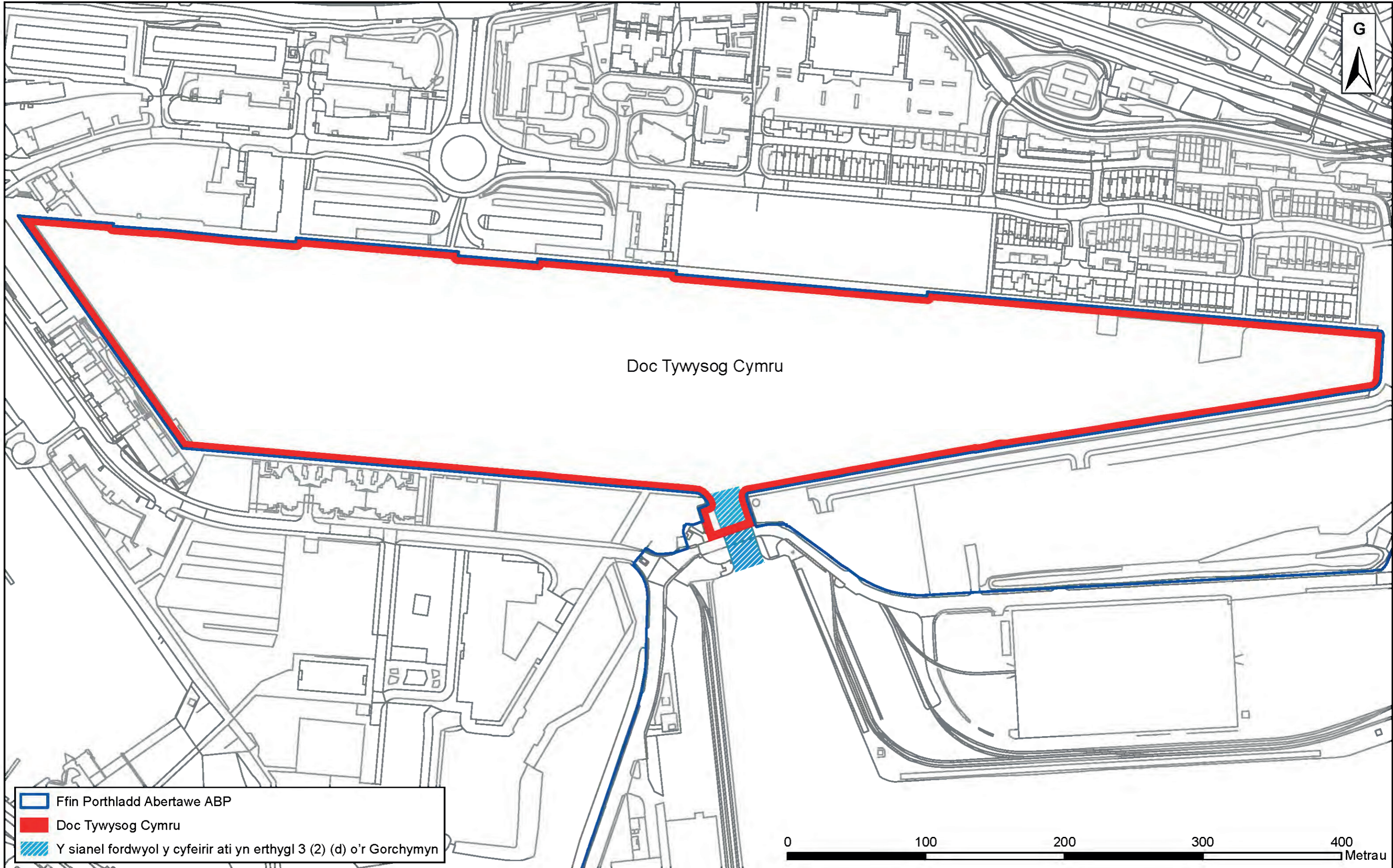
Port of Swansea Port Limits Plan

Date	By
12/05/22	AJB

Scale
1:35,000 @ A3

Atodlen 2 Erthygl 2
Plan Doc Tywysog Cymru

SCHEDULE 2 Article 2
The Prince of Wales Dock plan

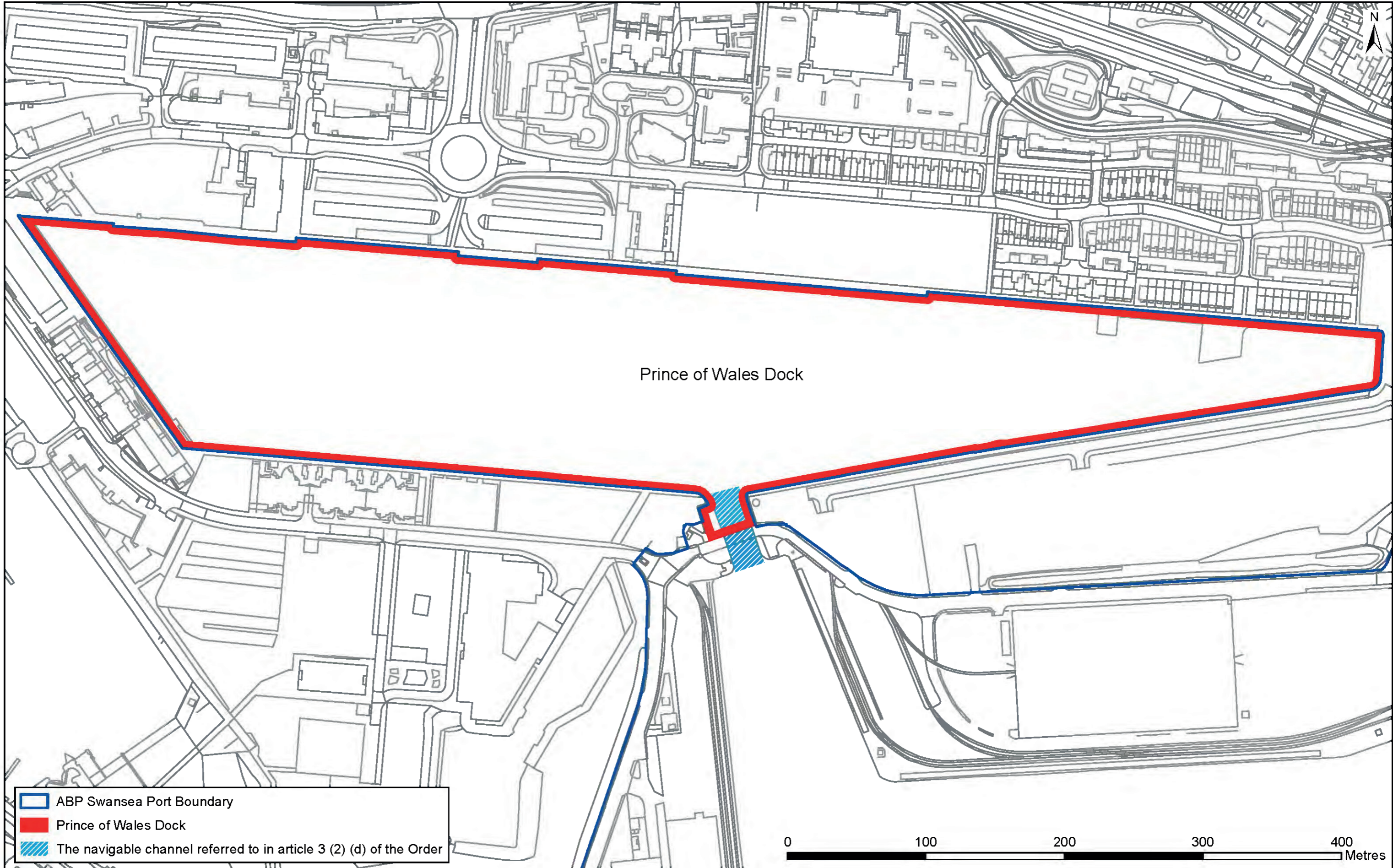


© Hawlfraint y Goron a hawliau cronfa ddata 2022 yr Arolwg Ordnans



Plan Doc Tywysog Cymru

Dyddiad	Gan
12/05/22	LD
Graddfa	
1:2,500 @ A3	



- ABP Swansea Port Boundary
- Prince of Wales Dock
- The navigable channel referred to in article 3 (2) (d) of the Order

© Crown copyright and database rights 2022 Ordnance Survey 0100031673



Prince of Wales Dock Plan

Date	By
12/05/22	LD
Scale	
1:2,500 @ A3	

©[©] Hawlfraint y Goron 2022

Argraffwyd a chyhoeddwyd yn y Deyrnas Unedig gan The Stationery Office Limited o dan awdurdod ac arolygiaeth Jeff James, Rheolwr Gwasg Ei Mawrhydi ac Argraffydd Deddfau Seneddol y Frenhines.

© Crown copyright 2022

Printed and published in the UK by The Stationery Office Limited under the authority and superintendence of Jeff James, Controller of Her Majesty's Stationery Office and Queen's Printer of Acts of Parliament.

£9.75

<http://www.legislation.gov.uk/id/wsi/2022/585>

ISBN 978-0-348-39310-1



9 780348 393101